



### Invitation To Bid (ITB)

Reference	ITB/CHAI/VIE/SL/0222
Posting Date	23 <sup>rd</sup> May 2023
Closing date	12 <sup>th</sup> June 2023

The Clinton Health Access Initiative is preparing to implement a supply chain that includes a liquid oxygen (LOX) source to explore the effectiveness of an alternative oxygen supply chain in Sierra Leone to supplement existing oxygen sources. This alternative supply chain is proposed to begin with an ISOtainer filled with LOX sourced from any cost-effective source which is then shipped to a filling station by a qualified filling agent. This filling agent will proceed to fill 45-60L LOX cylinders (micro-VIE tanks) with the LOX from this ISOtainer. The micro-VIE tanks will then be trucked to selected facilities in Sierra Leone. Figure 1 below depicts this supply scheme.

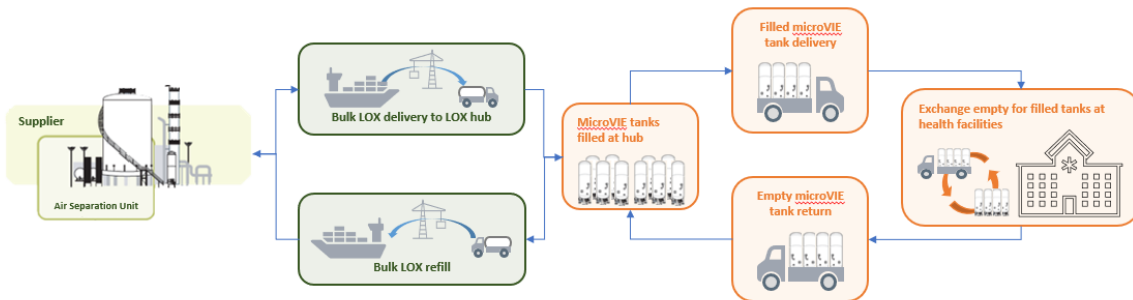


Figure 1: Supply Schematic for pilot

CHAI invites interested and capable vendors to submit bids for the supply of one or more of the following services required for the supply scheme proposed above: microVIE filling operations, first mile transport from filling source, to Freetown, Sierra Leone, and last mile transport from Freetown, to designated health facilities, detailed in specification package (Annex B) of this ITB. When preparing your Submission please be guided by the form attached as Annex A, and CHAI code of conduct and ethics for suppliers in Annex C. Please note that CHAI is running a [separate ITB](#) for the hardware that would be required to establish new microVIE filling operations (e.g., ISOtainer, microVIE tanks, and transfill accessories).

Any queries or clarifications on this ITB should be submitted via the email: [SLprocurement@clintonhealthaccess.org](mailto:SLprocurement@clintonhealthaccess.org) quoting ITB/CHAI/VIE/SL/0222 in the subject line by 19 midnight GMT on 5<sup>th</sup> June 2023. Responses will be shared via all ITB solicitation channels, as well as in email replies.

Quotations must be submitted on or before 12 midnight GMT (closing date above) via the email [SLprocurement@clintonhealthaccess.org](mailto:SLprocurement@clintonhealthaccess.org) quoting Reference ITB/CHAI/VIE/SL/0222 in the subject line. should your submission exceed 2 MB and cannot be sent by email, send an email to request an upload link with the subject 'Requesting upload link' to [SLprocurement@clintonhealthaccess.org](mailto:SLprocurement@clintonhealthaccess.org).

**Quotations submitted after the deadline will not be considered. Vendors may submit for one lot, all lots, or any combination of lots described. All products must be assessed against CHAI's quality policy. Vendors may be requested to submit additional information and/or cooperate with a site visit from CHAI to the filling site prior to finalizing a purchase order.**

#### Terms and conditions

Delivery Terms [INCOTERMS 2020]	DPU
Customs clearance and Duties, if needed, shall be done by:	CHAI
Exact Address/es of Delivery Location/s (identify all, if multiple)	<ol style="list-style-type: none"> <li>1. UBC Mattru Hospital, Bo road, Mattru jung, Mattru</li> <li>2. Koidu Government Hospital, Bona Street, Koidu, Kono district</li> <li>3. Kabala Government Hospital, Makeni road, Kabala, Koinadugu district</li> <li>4. Emergency Hospital, Goldrich, Sugarland, Western Area Rural district</li> </ol> <p>See Annex D for additional information.</p>
Latest Expected Delivery Date and Time ( <i>if delivery time exceeds this, quote may be rejected by CHAI</i> )	<b>July/2023</b>
Delivery Schedule	<b>Specify in comments section of Annex A</b>
Mode of Transport	<b>Please specify</b>
Preferred Currency of Quotation	<b>United States Dollars</b>
Warranty	Varies (see Annex B)
Deadline for the Submission of Bid	Closing date above
All documentations, including catalogs, instructions, and operating manuals, shall be in this language	<b>English</b>

Documents to be submitted.	<ol style="list-style-type: none"> <li>1. Completed Annex A and Annex B</li> <li>2. Legal Documentation (Business Registration and Tax Clearance) to operate in Home Country applicable to both local and international supplier, Business Registration, Tax Certificate (This is in addition to completed vendor details in Annex A) If documents are not in English, please provide translation.</li> <li>3. Standard documents attached e.g., CE, FDA</li> <li>4. Evidence of previous exports to target countries.</li> </ol>
Payment Terms	100% after project delivery and inspection of goods delivered to final destination preferred but other terms can be negotiated
Liquidated Damages	1% of total contract amount for each day of delay and maximum of 30 days after which contract will be terminated.
Evaluation Criteria	<ol style="list-style-type: none"> <li>1. Technical responsiveness/Full compliance to requirements and lowest evaluated price</li> <li>2. Delivery period</li> <li>3. Full acceptance of the PO/Contract General Terms and Conditions</li> </ol>
Type of Contract to be Signed	Memorandum of Agreement
Special Conditions of Contract	Failure to comply with delivery date above shall be a basis for cancellation. Forfeiture of bid security if submitted with the bids if applicable. CHAI reserves the right to select any single or combination of supplier(s)
Proposal validity	90 days
Conditions for Release of Payment	Passing Inspection/Verification of Supplies Written Acceptance of Goods and Services based on full compliance with RFQ requirements by the end user
Annexes to this RFQ	<input checked="" type="checkbox"/> Product quantities and delivery location ( <b>Annex A</b> ) <input checked="" type="checkbox"/> Technical specification ( <b>Annex B</b> ) <input checked="" type="checkbox"/> Code of conduct ( <b>Annex C</b> ) <input checked="" type="checkbox"/> Supply Schematic for pilot ( <b>Figure 1</b> )
Contact Person for Inquiries (Written inquiries only)	All queries must be sent to <a href="mailto:SLprocurement@clintonhealthaccess.org">SLprocurement@clintonhealthaccess.org</a>

### Annex A: Products information and vendor details

Products information, required quantities and detailed delivery location is found in sheets 1 and sheet 2 of Annex A. This can be found via this [Product information and vendor details](#) link. Download the excel sheet, complete, and include in your application. If you are unable to access this link, please contact us via [SLprocurement@clintonhealthaccess.org](mailto:SLprocurement@clintonhealthaccess.org) and we will email the documents to you.

### LOT 1

Product	Qty	Country
MicroVIE filling operations	6 months	Sierra Leone*

\*Vendors may propose alternative sites according to their base of operations.

#### LOT 2

Product	Qty	Country
First mile transport to Sierra Leone*	6 months	Sierra Leone

\*Only applicable if filling operations are based outside of Sierra Leone.

#### LOT 3

Product	Qty	Country
Last mile transport to health facilities	6 months	Sierra Leone

#### Annex B: Technical Specification and Shipping requirement

Technical specifications for items can be found via this link: [Specification and checklist](#) download the excel sheet, complete, and include in your application. If you are unable to access this link, please contact us via [SLprocurement@clintonhealthaccess.org](mailto:SLprocurement@clintonhealthaccess.org) and we will email the documents to you.

#### Annex C: CHAI code of conduct for suppliers

The CHAI code of conduct for suppliers is a minimum set of requirements that suppliers must meet to qualify to do business with CHAI and remain in good standing with the organization. Please read the document via this link [Code of Conduct for Suppliers](#) and apply for this solicitation only if your organization can comply with these requirements.

**Annex D: Requirements for submission of Lot 2 & 3** Suppliers for Lot 2 and Lot 3 must submit a detailed proposed supply and distribution plan. Core requirements that must be met by suppliers in this proposed supply plan includes:

1. Suppliers must deliver the minimum requested volumes for each facility, with an additional 30% buffer for unexpected needs. See Table 1, below.
2. Suppliers must ensure the minimum number of usable cylinders (i.e. full enough to supply patients) are available per bed at any given time). See Table 2, below.
3. Suppliers should explicitly account for the cost and volume implications of off-gassing which occurs during delivery. [See Table 4, below.](#)
4. Suppliers must submit a detailed plan and account for how safety, security and liabilities will be managed.
5. The supply plan must include route information, expected cost per month and frequency and volume of deliveries (in Litres liquid and number of cylinders).
6. A redundancy and/or risk mitigation plan should be provided in advance, to address the event that a supplier does not have the capacity to deliver the full volumes to any of the sites required in a safe manner.

Suppliers for Lot 2 and Lot 3 will be expected to work within a specific set of constraints for the project, including:

7. Usage limited to a supply of 252 microVIE cylinders, with a capacity of 30L. [Detailed specifications are here:](#)
8. Availability of storage space in government owned central storage at this address: Central Store, Off Jomo Kenyatta Road, New England Ville, Freetown, Sierra Leone
9. No fuel, vehicles or additional human resources will be provided by the government unless specifically requested (requests will be taken into consideration when bids are evaluated, with the sustainability of the cost and complexity of requests accounted for).

Please note, bids for first and/or last mile deliver to one or more sites will be accepted (I.e., suppliers do not have to submit a bid for all 4 sites in order to be successful).

Key information for each of the delivery sites is summarized in the tables below. Applicants may apply for delivery to one or more sites for the first or last mile.

Table 1: Site location, distance, and travel times, by facility

<b>Facility name</b>	<b>District</b>	<b>GPS coordinates</b>	<b>Estimated Distance from Freetown central storage (km)</b>	<b>Drive/travel time from Freetown central storage to facility (min)*</b>	<b>Road conditions (dirt road, uneven brick road, partially paved road, fully paved road)</b>
Koidu Government Hospital	Kono	8.64826; 10.96617	374	5 hours	Fully paved road
Emergency Hospital	Western Area Rural	8.42199; -13.2757	16	25 mins	Fully paved road
UBC hospital	Bonthe	7.6049; 12.1674	323	4 hours, 45 mins	Significant portions of unpaved road, single vehicle dirt track
Kabala Government	Koinadugu	9.5865; 11.5483	312	4hrs	Fully paved road

Hospital					
----------	--	--	--	--	--

\*Please note, drive/travel times provided are approximate based on Google Maps. Road conditions and seasonal differences should be accounted for in the delivery plan.

Table 2: Minimum liquid oxygen Volumes required, by facility.

Facility name	District	Piping	Beds in selected wards (Pediatric, Neonatal and ER)	Anticipated volume required in selected wards (Litres of Liquid per month – 230 psi)	Anticipated number of cylinder (based on beds being provided for)
Koidu Government Hospital	Kono	No	83	561	42
Emergency Hospital	Western Area Rural	No	4	50	2
UBC Matru hospital	Bonthe	No	17	139	9
Kabala Government Hospital	Koinadugu	No	49	359	25

Table 3: Detailed description of road conditions, by facility (Valid as of April 2023. Vendors are encouraged to validate the road conditions).

Health Facility Name	Road Condition	Potholes	Supporting Evidence
UBC Matru	<ul style="list-style-type: none"> <li>Similar route from Freetown or Conakry: 87km of route is off the highway, much of which is single track, dirt road.</li> <li>Alternative route involves a ferry with 30 km of non-highway conditions.</li> </ul>	Extensive in non-highway areas	See Image 1 for example of road conditions and Image 2 for site conditions
Koidu Hospital	<ul style="list-style-type: none"> <li>From Conakry, primarily utilizes highway (N4, Lunsar-Makeni,</li> </ul>	Intermittent, with some maintenance	See Image 3 for example of road

	<p>Magburaka). The hospital is next to a well-paved, two-lane road.</p> <ul style="list-style-type: none"> <li>• From Freetown, route similarly uses highways with at least 2 routing options (Masiaka-Yonibana, Lunsar-Makeni, Magburaka or alternative via ferry)</li> </ul>	by highway owners and individuals	conditions and Image 4 for site conditions.
Kabala Government Hospital	<ul style="list-style-type: none"> <li>• From Conakry, primarily utilizes highway (N4, Lunsar-Makeni, Kabala Highway). The hospital is next to a well-paved, two-lane road.</li> <li>• From Freetown, route similarly uses highways with at least 3 routing options (Masiaka-Yonibana, Lunsar-Makeni, Kabala; one option with a ferry)</li> </ul>	Intermittent, with some maintenance by highway owners and individuals	See Image 5 for example of road conditions and Image 6 for site conditions.
Emergency Hospital	<ul style="list-style-type: none"> <li>• Mostly the highway between Freetown and Conakry (N4, Masiaka-Yonibana Highway, Peninsular Highway) with some two-lane roundabouts. The hospital is next to a well-paved, two-lane road. Highways mostly pass through urban areas. Even in uninhabited stretches, highway condition appears to be paved with at least two lanes.</li> </ul>	Intermittent, with some maintenance by highway owners and individuals	See Images 7 and 8 for example of road conditions.



Image 1: Satellite image of road to UBC Mattru Hospital shows single dirt track road for a stretch of at least 80km

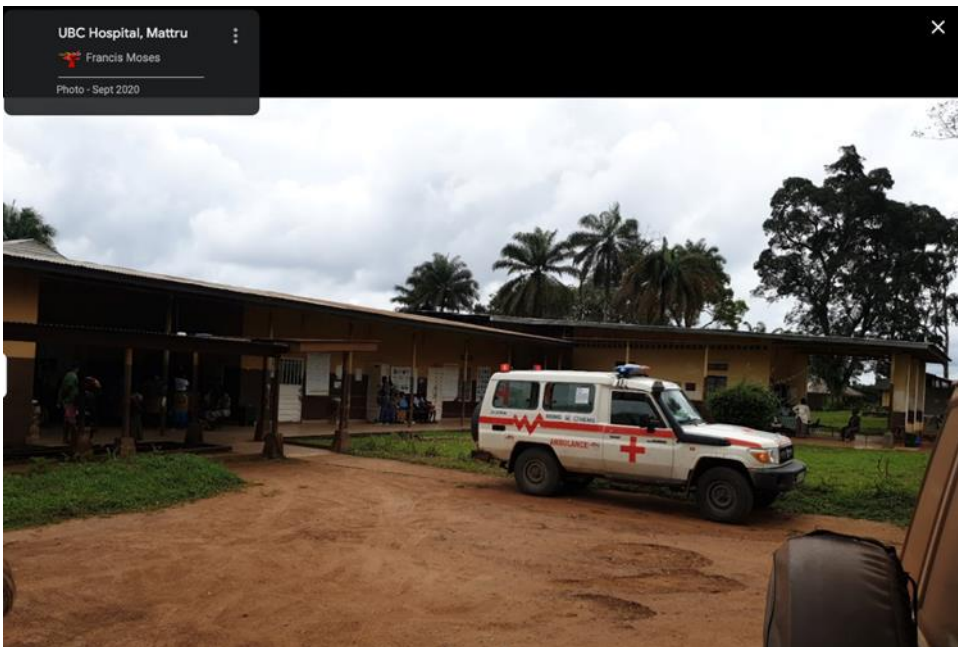


Image 2: Images of the UBC Mattru Hospital site show the site may be unpaved, hindering access and intra-facility transport, particularly during rainy season.



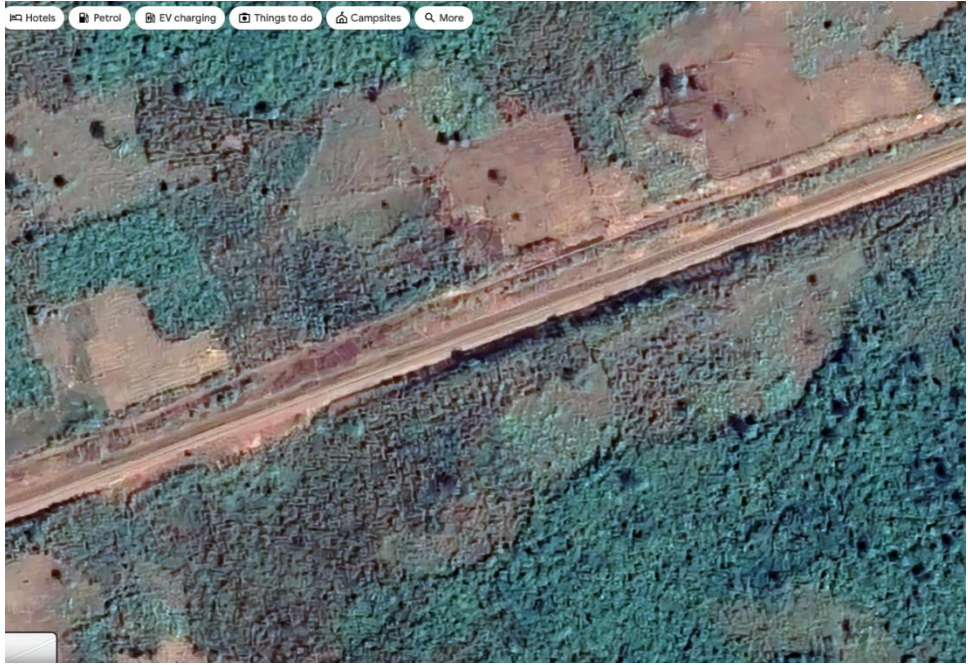


Image 3: Satellite image of highway road to Koidu Government Hospital, showing at least two paved lanes.



Image 4: Satellite image of Koidu Government Hospital. The site appears to be multiple buildings, paved, with access to paved roads.



Image 5: Road to Kabala Government Hospital



Image 6: Kabala Government Hospital is on a paved, two-lane road and photos indicate the site is paved.

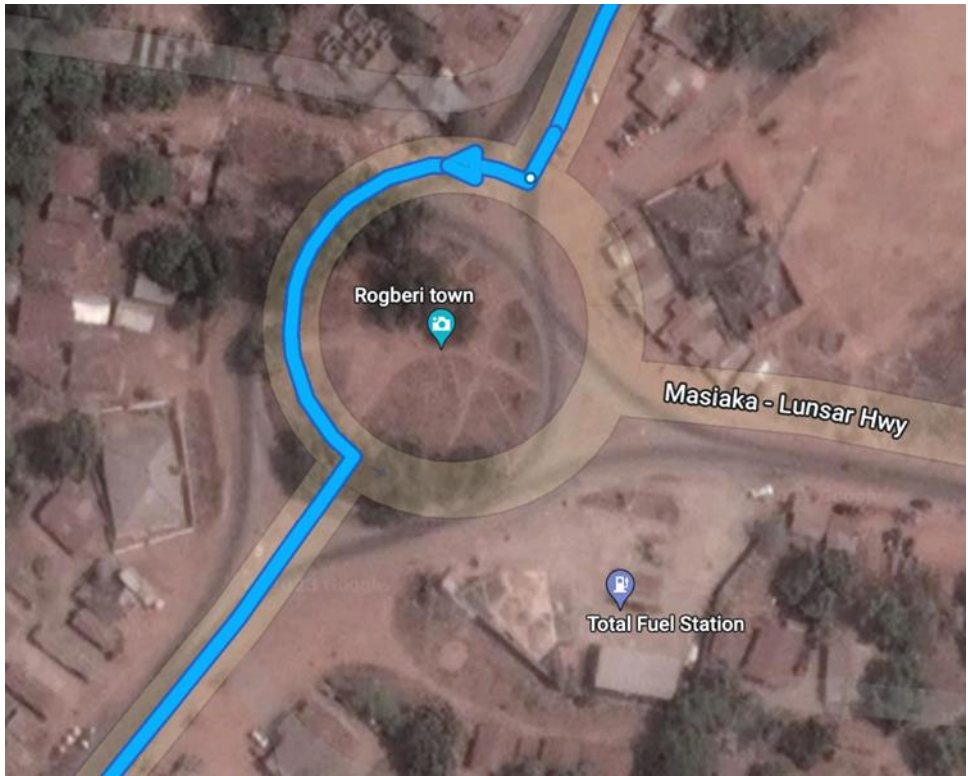


Image 7: Satellite image of roundabout in Rogberi, en route from Conakry to Emergency Hospital in Freetown

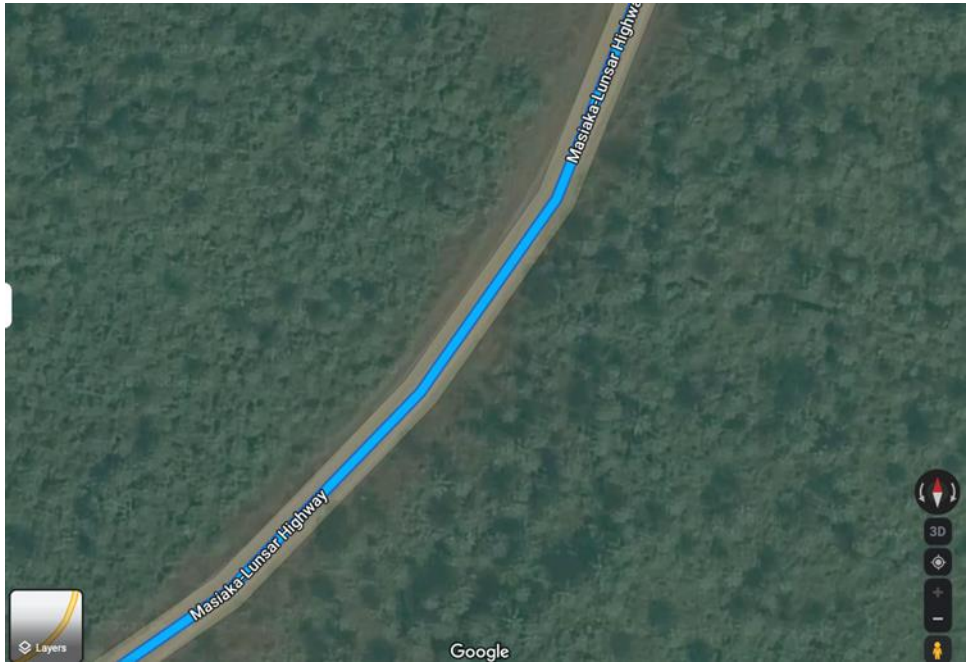


Image 8: Road conditions in uninhabited stretches of highway between Conakry and Emergency Hospital in Freetown show paved roads with a minimum of two lanes.

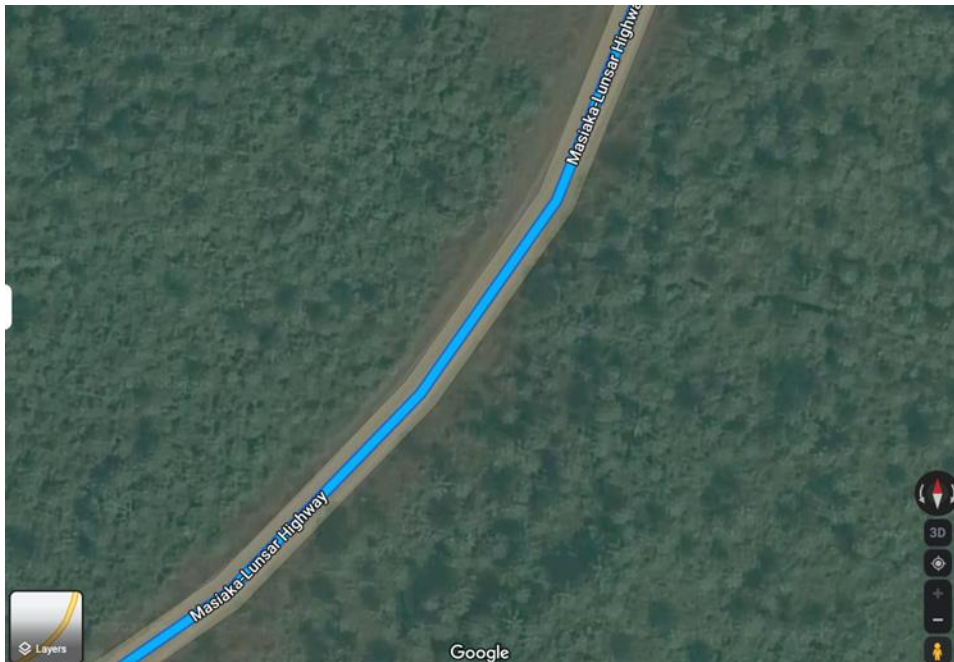


Image 9: Road conditions in uninhabited stretches of highway between Conakry and Emergency Hospital in Freetown show paved roads with a minimum of two lanes.

Table 4: Key information for potential MicroVIEs to be used in pilot.

Model	TBD
Total number available	252
Volume	45 – 60L at operating pressure of 20 PSI and fill pressure requirement of 35- 50 PSI
Off-gas rate	0.73 kg per day

The full solicitation is available online. Please type the following address in your browser to view: <https://www.clintonhealthaccess.org/rfp/invitation-to-bid-itb-for-the-supply-of-an-alternative-oxygen-supply-chain-system-in-sierra-leone/>

**NB: This version of the ITB supersedes all other versions shared earlier!**